



11:20

240m



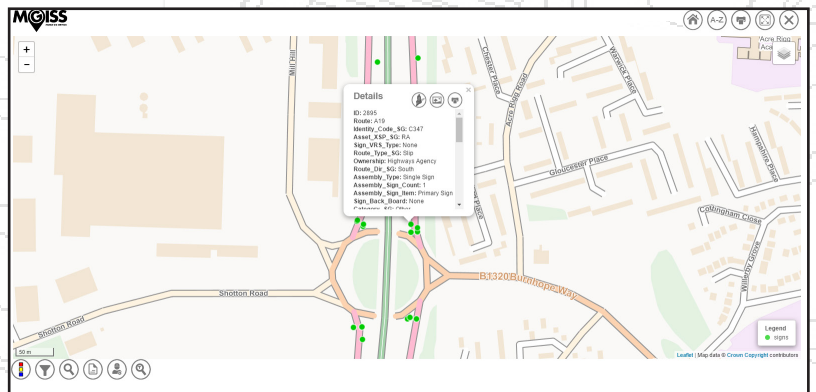
# Web Maps



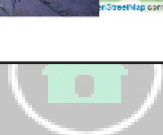
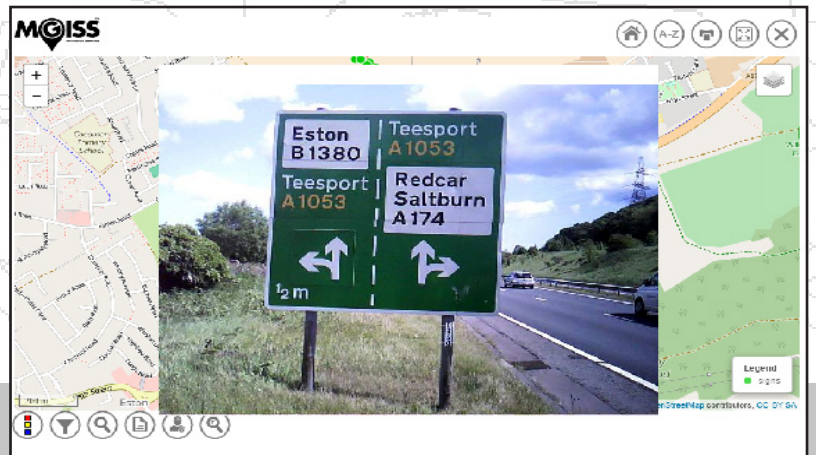
Do you share data with clients using reports, spreadsheets and GIS/CAD files?

Web maps can show georeferenced data on a map instantly and can often answer questions to enable clients to make quick decisions about their assets, such as, which need replacing and which are high risk.

MGISS web maps allow the user to filter the data using interactive tools including pre-defined queries and produce onscreen reports which can be exported in many different formats.



Based on Ordnance Survey OpenData and MasterMap (licensed) data. The user can pan and zoom, search and display the map layers they need and view any linked data such as photos, documents and historical records.



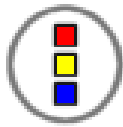
Toolbox

Record

Edit

Home

# So what do I get as standard?



Preset styles - up to 3 themed styles by attribute  
The style set here controls the onscreen legend.

For example, show risk categories on network assets, work priority or asset type.



Preset filters - up to 3 filters by attribute

The results of the filter are automatically applied and displayed on the map.

For example, Show me all the features within a defined area.



Generic filter search - displays drop down list of all database attributes for selection.

Results will be displayed automatically on the map.

(Also see report functions below)



Gazetteer search by OS roadname/postcode sector.



Create report - based on the results of either predefined or generic filter search Data can be viewed and exported into a number of report formats. (SHP, KML, DXF, CSV, XLS)



Feature info tools:  
Google Streetview  
View asset photo  
Print map



Assign to fieldworker - This option is only available with the Grafi SpatialHub Solution. (Requires GeoGrafi-M mobile application)  
Send data in real time to and from the field for inspection/ collection.



Toolbox



Record



Edit



Home